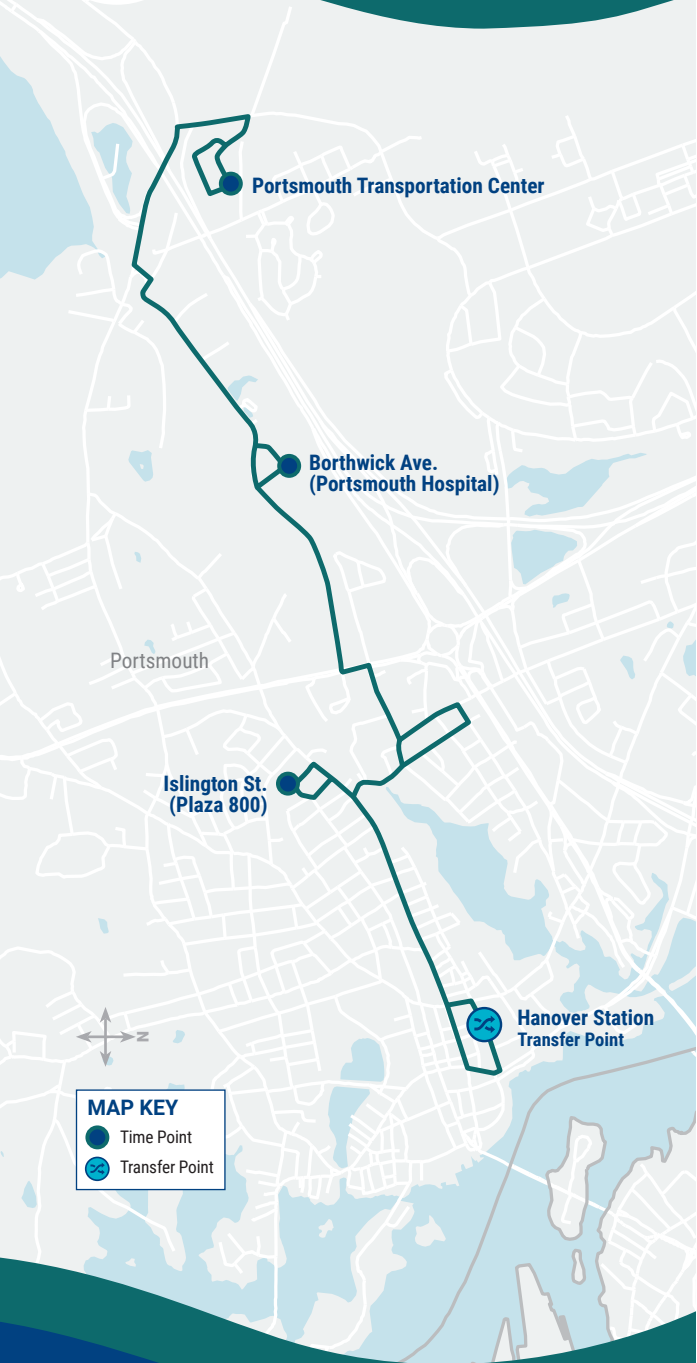


# 40

## Route 40 Map

Portsmouth Islington Borthwick



## Ride Information

### COAST BUS FARES

**Base Cash Fare** **\$1.50**  
*All passengers ages 5 and up are required to pay this fare each time they board a COAST bus.*

**Half-Fare** **\$ 0.75**  
*Passengers 65 and older, or passengers with a disability are entitled to pay half the cash fare. Proof of eligibility is required by showing a Medicare card, photo ID with birth date, COAST ADA Paratransit Card, or COAST Half-Fare Card. Please contact COAST to apply for a Half-Fare Card.*

**Multi-Ride Tickets and Passes**  
*Available at [www.coastbus.org](http://www.coastbus.org) or call 603-743-5777, TTY 711.*

### YOUR RIGHTS

COAST adheres to all Federal regulations regarding Civil Rights. If you need to request an ADA Reasonable Modification/Accommodation, or if you believe you have been discriminated against or would like to file a complaint under the ADA or Title VI, please contact COAST's Civil Rights Officer at 603-516-0788, TTY 711 or email [CivilRights@coastbus.org](mailto:CivilRights@coastbus.org).

## COAST

### NO SERVICE DAYS

COAST does not operate on the following holidays:

- New Year's Day
- Labor Day
- Martin Luther King Jr./ Civil Rights Day
- Thanksgiving Day
- Memorial Day
- Christmas Eve Day
- Independence Day
- Christmas Day



42 Sumner Drive • Dover, NH 03820  
 603-743-5777 • TTY 711 • [www.coastbus.org](http://www.coastbus.org)  
*This brochure is available in alternative formats upon request.*

## Bus Schedule & Map 40



# ROUTE 40

Portsmouth Islington Borthwick



Find all of the full COAST schedules online at [coastbus.org](http://coastbus.org)

## MAP OUT YOUR GAME PLAN

Planning your trip has never been easier!

[www.coastbus.org](http://www.coastbus.org)



# COAST SYSTEM MAP



## OUTBOUND • INBOUND

# Route 40

Portsmouth • Islington • Borthwick

### How to Read the Schedule

Printed bus schedules only show the timepoints ● (major bus stops where the bus will hold until the scheduled departure time). In between those timepoints are many other stops that you can use. For a full listing of bus stops, visit [www.coastbus.org](http://www.coastbus.org), or use the DoubleMap App.

The times shown represent the number of minutes after the hour that the bus will depart from that stop. Last stop times are arrivals. Any exceptions will be noted.

OUTBOUND (M-Sat)	Service On Every Hour		
Hanover Station - Portsmouth Transportation Center	First Bus	Minutes Past Hour	Last Bus
● Hanover Station	6:00am	:00*	7:00pm
● Islington St. (Plaza 800)	6:07am	:07*	7:07pm
● Borthwick Ave. (Ports. Hospital)	6:15am	:15*	7:15pm
● Portsmouth Transportation Center	6:23am	:23*	7:23pm

\*No Service during the hour of 3pm.

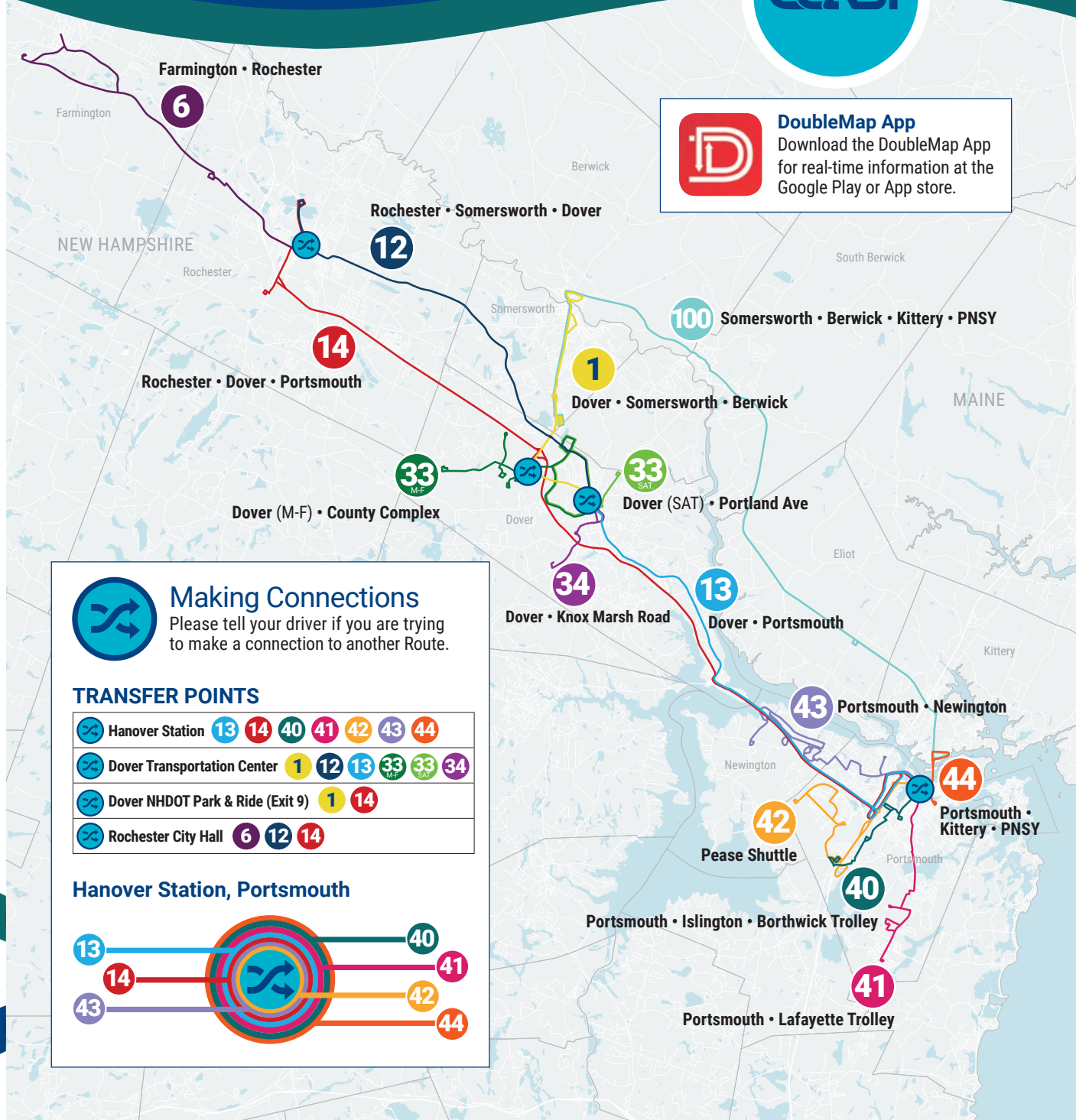
INBOUND (M-Sat)	Service On Every Hour		
Portsmouth Transportation Center - Hanover Station	First Bus	Minutes Past Hour	Last Bus
● Portsmouth Transportation Center	6:24am	:24*	7:24pm
● Borthwick Ave. (Ports. Hospital)	6:31am	:31*	7:31pm
● Islington St. (Plaza 800)	6:39am	:39*	7:39pm
● Hanover Station	6:47am	:47*	7:47pm

\*No Service during the hour of 3pm.



## MAP IT!

For a full listing of bus stops, visit [www.coastbus.org](http://www.coastbus.org) or use the DoubleMap App.



**DoubleMap App**  
Download the DoubleMap App for real-time information at the Google Play or App store.



### Making Connections

Please tell your driver if you are trying to make a connection to another Route.

#### TRANSFER POINTS

Hanover Station	13 14 40 41 42 43 44
Dover Transportation Center	1 12 13 33 33 34
Dover NHDOT Park & Ride (Exit 9)	1 14
Rochester City Hall	6 12 14

#### Hanover Station, Portsmouth

