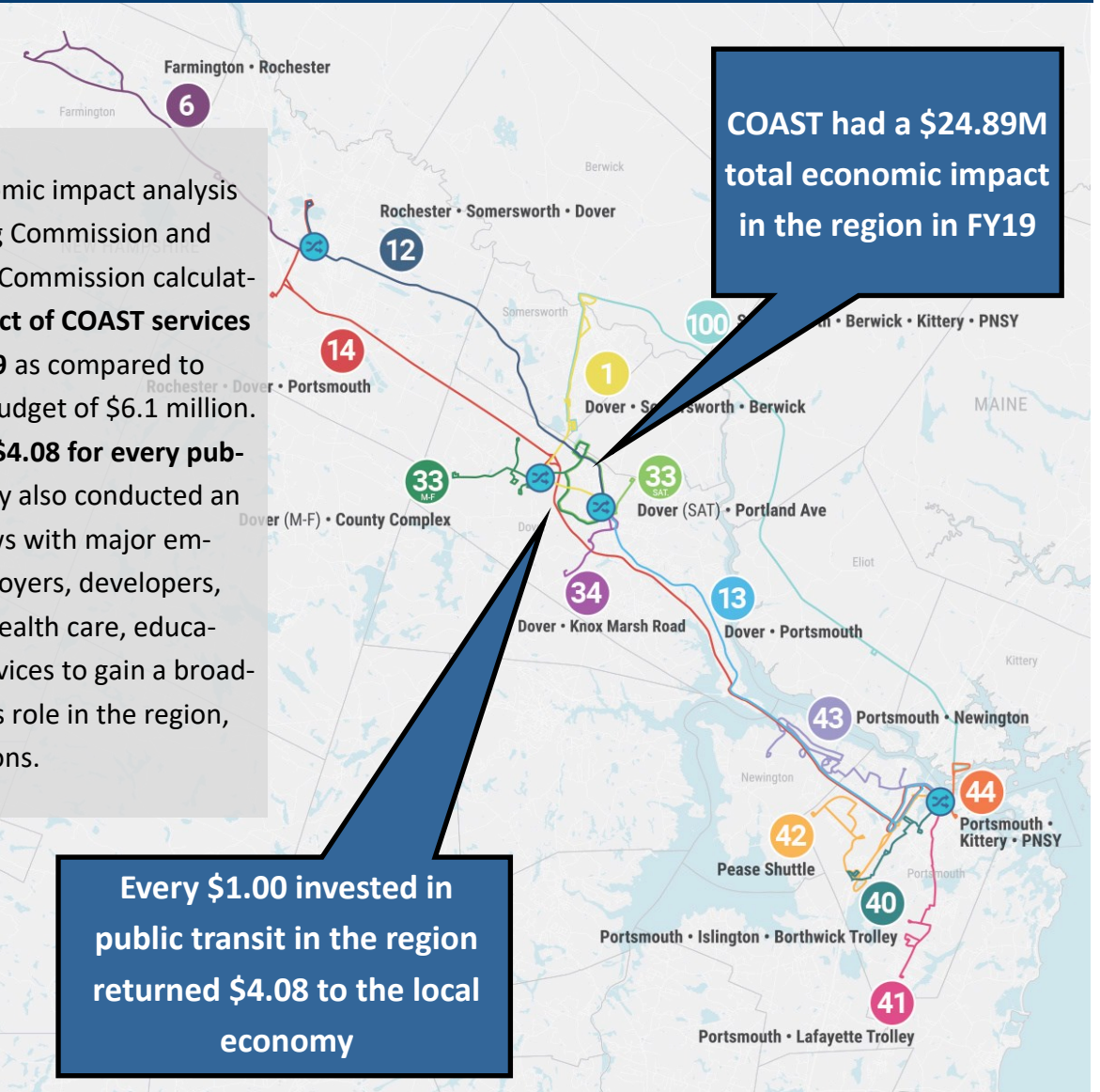




# Economic Impacts of COAST Transit Service In Seacoast New Hampshire

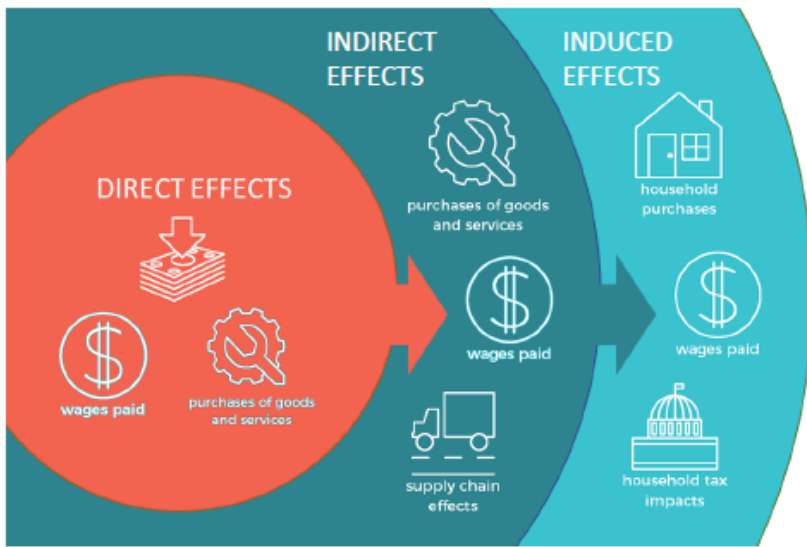
A recently completed economic impact analysis by the Rockingham Planning Commission and Strafford Regional Planning Commission calculated the **total economic impact of COAST services at \$24.89 million for FY2019** as compared to COAST's annual operating budget of \$6.1 million. This represents a **return of \$4.08 for every public dollar invested**. The study also conducted an extensive series of interviews with major employers, service sector employers, developers, and other professionals in health care, education, housing and social services to gain a broader understanding of transit's role in the region, its strengths and its limitations.

- Economic Model Sources:
- IMPLAN / APTA
  - TCRP



**COAST had a \$24.89M total economic impact in the region in FY19**

**Every \$1.00 invested in public transit in the region returned \$4.08 to the local economy**



**DIRECT EFFECTS = \$7.23M**

Direct spending by COAST on operations and maintenance including employee wages and purchase of goods and services

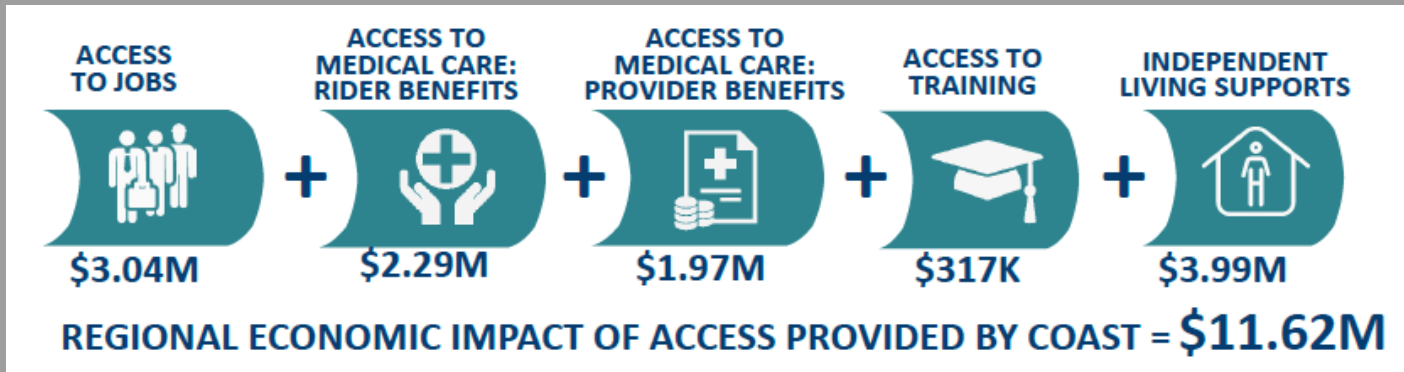
**INDIRECT EFFECTS = \$3.78M**

COAST contractors in turn spend revenue from COAST contracts on wages, goods and services from other local business sectors

**INDUCED EFFECTS = \$3.28M**

Spending by employees of COAST and COAST contractors on goods and services, recirculating within the regional economy.

**REGIONAL ECONOMIC IMPACT OF COAST SPENDING = \$14.28M**



## What is the Importance of COAST public transit services to people, businesses, and agencies in the region?

"If the region were to lose regional public transit services, the effects would be awful. We would not be able to attract enough workers into downtown Portsmouth."

Patrick P., Portsmouth Brewery

"The number one thing that older adults say they need is transit."

Brinn S., Portsmouth Senior Services

"Many agencies in the City prioritize their proximity to COAST routes for their client's access."

Julian L., City of Rochester

"As a community bank we locate our branches near public transit routes."

Tiffany M., First Seacoast Bank

"There is a direct correlation between public transit and student attendance."

Deanna S., DALC