

# COAST SYSTEM MAP

COAST

COAST Connections

## Route 12 | 13 | 14

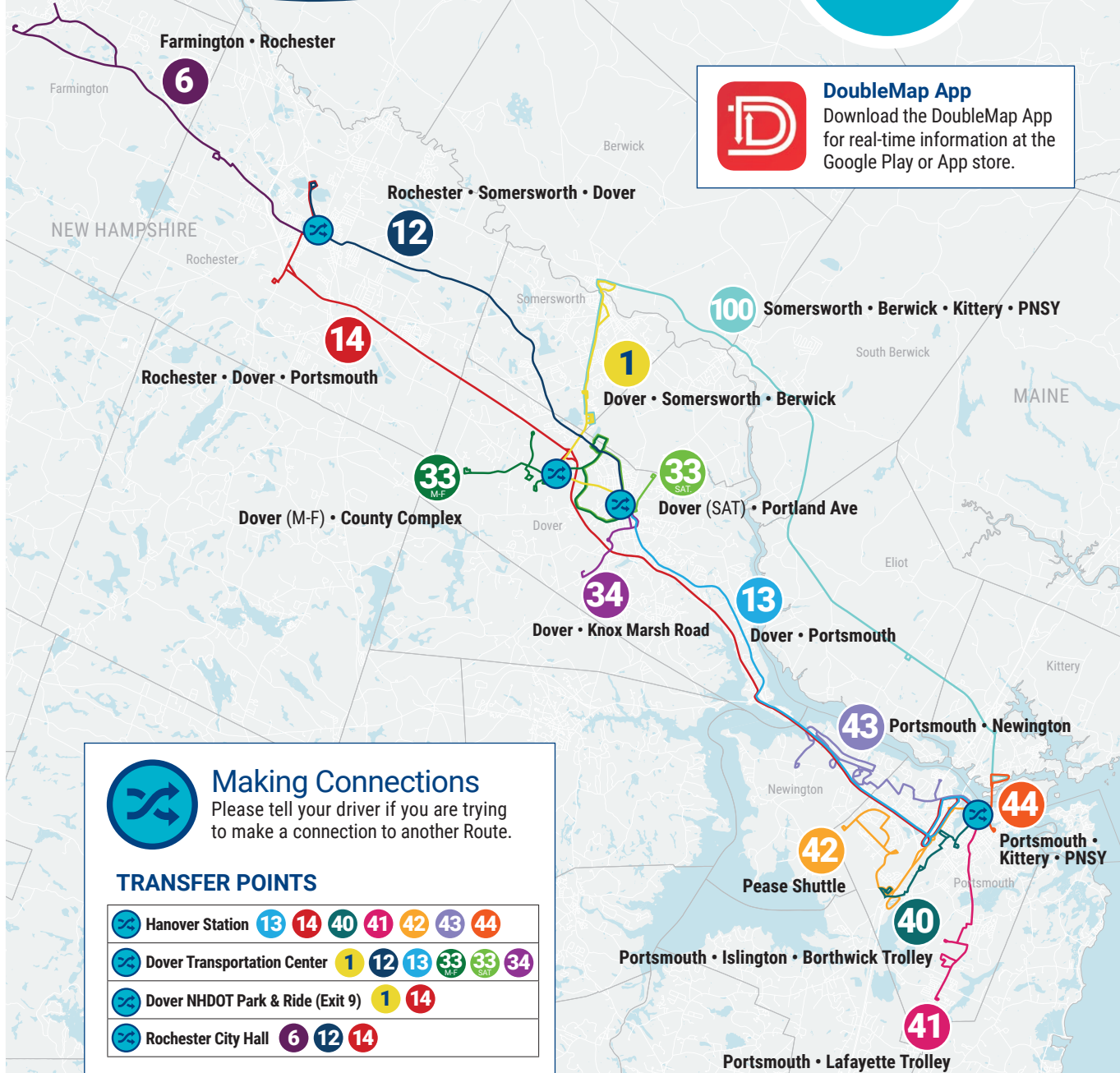
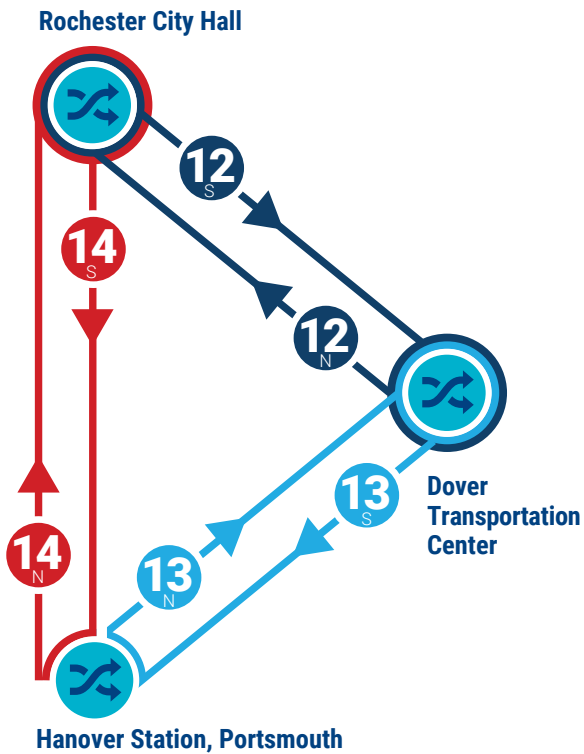
Rochester • Somersworth • Dover • Portsmouth

### INTERLINED

Routes 12 | 13 | 14 are **Interlined Bus Routes**.

**Route 12** continues as **Route 13** after arriving at Dover Transportation Center (and vice versa in the other direction). **Route 12** also continues as **Route 14** after arriving at the Lilac Mall, Rochester (and vice versa in the other direction).

Passengers on Routes 12 | 13 | 14 can ride through these routes on a single bus in either direction at the Rochester City Hall and Dover Transportation Center transfer hubs and for a single \$1.50 fare.



#### DoubleMap App

Download the DoubleMap App for real-time information at the Google Play or App store.



#### Making Connections

Please tell your driver if you are trying to make a connection to another Route.

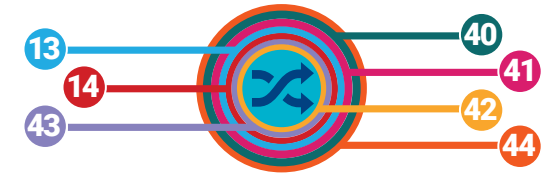
#### TRANSFER POINTS

	Hanover Station	13	14	40	41	42	43	44
	Dover Transportation Center	1	12	13	33 <sub>M-F</sub>	33 <sub>SAT</sub>	34	
	Dover NHDOT Park & Ride (Exit 9)	1	14					
	Rochester City Hall	6	12	14				

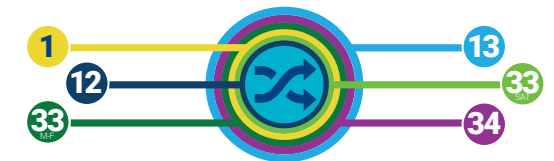
### TRANSFER HUBS

The following locations are key transfer points on the COAST public transit system. Please tell your driver when you board if you are trying to make a connection to another route.

#### HANOVER STATION, PORTSMOUTH



#### DOVER TRANSPORTATION CENTER



#### DOVER NHDOT PARK & RIDE (EXIT 9)



#### ROCHESTER CITY HALL



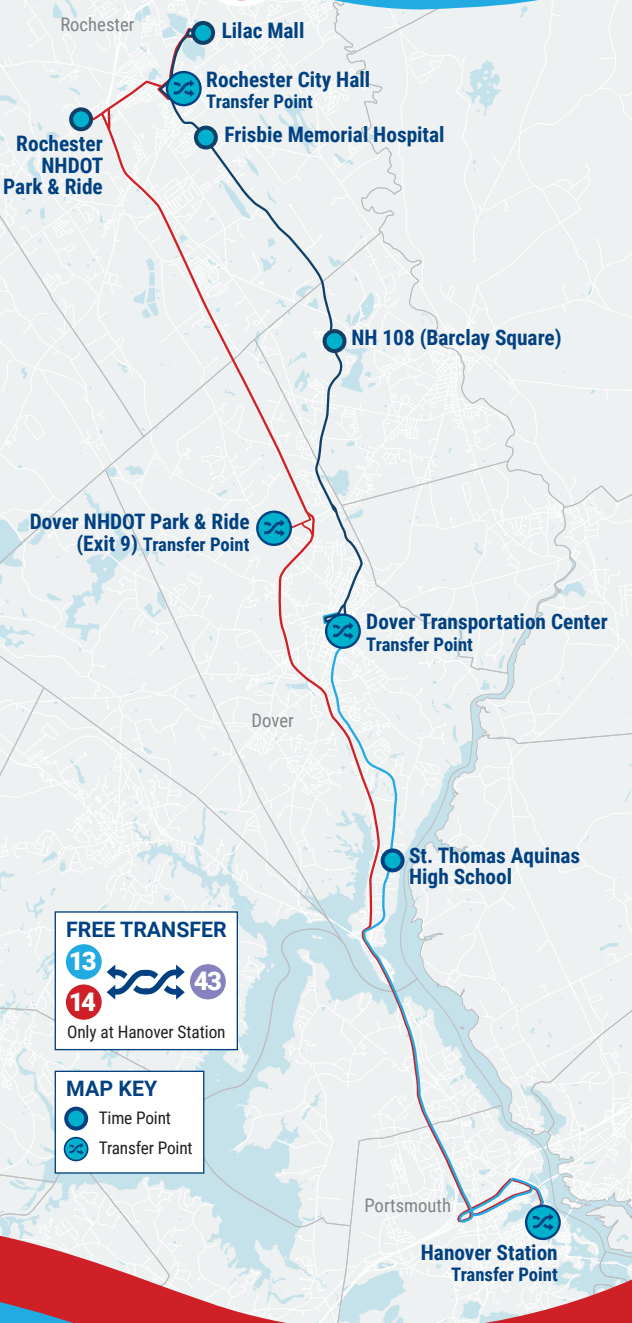
### MAP IT!

For a full listing of bus stops, visit [www.coastbus.org](http://www.coastbus.org) or use the DoubleMap App.



**INTERLINKED**  
**Route 12 | 13 | 14**

Rochester • Somersworth • Dover • Portsmouth



**FREE TRANSFER**  
13 ↔ 14 ↔ 43  
Only at Hanover Station

**MAP KEY**  
● Time Point  
⊕ Transfer Point



Ride Information

**COAST BUS FARES**

**Base Cash Fare** **\$1.50**

All passengers ages 5 and up are required to pay this fare each time they board a COAST bus.

**Half-Fare** **\$ 0.75**

Passengers 65 and older, or passengers with a disability are entitled to pay half the cash fare. Proof of eligibility is required by showing a Medicare card, photo ID with birth date, COAST ADA Paratransit Card, or COAST Half-Fare Card. Please contact COAST to apply for a Half-Fare Card.

**Multi-Ride Tickets and Passes**

Available at [www.coastbus.org](http://www.coastbus.org) or call 603-743-5777, TTY 711.

**YOUR RIGHTS**

COAST adheres to all Federal regulations regarding Civil Rights. If you need to request an ADA Reasonable Modification/Accommodation, or if you believe you have been discriminated against or would like to file a complaint under the ADA or Title VI, please contact COAST's Civil Rights Officer at 603-516-0788, TTY 711 or email [CivilRights@coastbus.org](mailto:CivilRights@coastbus.org).

**COAST**  
**NO SERVICE DAYS**

COAST does not operate on the following holidays:

- New Year's Day
- Martin Luther King Jr./ Civil Rights Day
- Memorial Day
- Independence Day
- Labor Day
- Thanksgiving Day
- Christmas Eve Day
- Christmas Day



42 Sumner Drive • Dover, NH 03820  
603-743-5777 • TTY 711 • [www.coastbus.org](http://www.coastbus.org)  
This brochure is available in alternative formats upon request.

**Bus Schedule & Map**



Rochester • Somersworth • Dover • Portsmouth



Find all of the full COAST schedules online at [coastbus.org](http://coastbus.org)

**MAP OUT YOUR GAME PLAN**

Planning your trip has never been easier!

[www.coastbus.org](http://www.coastbus.org)



INTERLINKED: NORTH & SOUTHBOUND

**Route 12 | 13 | 14**

Rochester • Somersworth • Dover • Portsmouth

**How to Read the Schedule**

Printed bus schedules only show the timepoints (major bus stops where the bus will hold until the scheduled departure time). In between those timepoints are many other stops that you can use. For a full listing of bus stops, visit [www.coastbus.org](http://www.coastbus.org), or use the DoubleMap App. The times shown represent the number of minutes after the hour that the bus will depart from that stop. Last stop times are arrivals. Any exceptions will be noted.

NORTHBOUND (M-Sat)		Service On Every Hour		
13	PORTSMOUTH - DOVER	First Bus	Minutes Past Hour	Last Bus
	● Hanover Station	5:56am	:00*	9:00pm
	● St. Thomas Aquinas High School	6:14am	:14	9:14pm
	● Dover Transportation Center	6:26am	:26	9:26pm

NORTHBOUND (M-Sat)		Service On Every Hour		
12	DOVER - ROCHESTER	First Bus	Minutes Past Hour	Last Bus
	● Dover Transportation Center	6:30am	:30	9:30pm
	● NH 108 (Goodwin Community Health)	6:44am	:44	9:44pm
	● Frisbie Memorial Hospital	6:52am	:52	9:52pm
	● Lilac Mall	6:59am	:59	9:59pm

SOUTHBOUND (M-Sat)		Service On Every Hour		
14	ROCHESTER - PORTSMOUTH	First Bus	Minutes Past Hour	Last Bus
	● Lilac Mall	5:09am	:09*	10:09pm
	● Rochester Park & Ride	5:18am	:18*	10:18pm
	● Dover NHDOT Park & Ride (Exit 9)	5:31am	:31*	10:31pm**
	● Hanover Station	5:54am+	:54*	8:54pm

\*\*9:31pm and 10:31pm are arrival times (last stop that run).

NORTHBOUND (M-Sat)		Service On Every Hour		
14	PORTSMOUTH - ROCHESTER	First Bus	Minutes Past Hour	Last Bus
	● Hanover Station	5:54am	:00*	8:00pm
	● Dover NHDOT Park & Ride (Exit 9)	6:23am	:23*	8:23pm
	● Rochester Park & Ride	6:37am	:37*	8:37pm
	● Lilac Mall	6:49am	:49*	8:49pm

SOUTHBOUND (M-Sat)		Service On Every Hour		
12	ROCHESTER - DOVER	First Bus	Minutes Past Hour	Last Bus
	● Lilac Mall	5:56am	:56	7:56pm
	● Frisbie Memorial Hospital	6:05am	:05	8:05pm
	● NH 108 (Barclay Square)	6:11am	:11	8:11pm
	● Dover Transportation Center	6:30am	:30	8:30pm

SOUTHBOUND (M-Sat)		Service On Every Hour		
13	DOVER - PORTSMOUTH	First Bus	Minutes Past Hour	Last Bus
	● Dover Transportation Center	5:30am	:30	8:30pm
	● St. Thomas Aquinas High School	5:40am	:40	8:40pm
	● Hanover Station	5:56am+	:56	8:56pm

\*Regular hourly schedule starts during the hour of 7am.

+First runs continue directly to the PNSY without the need for a transfer.