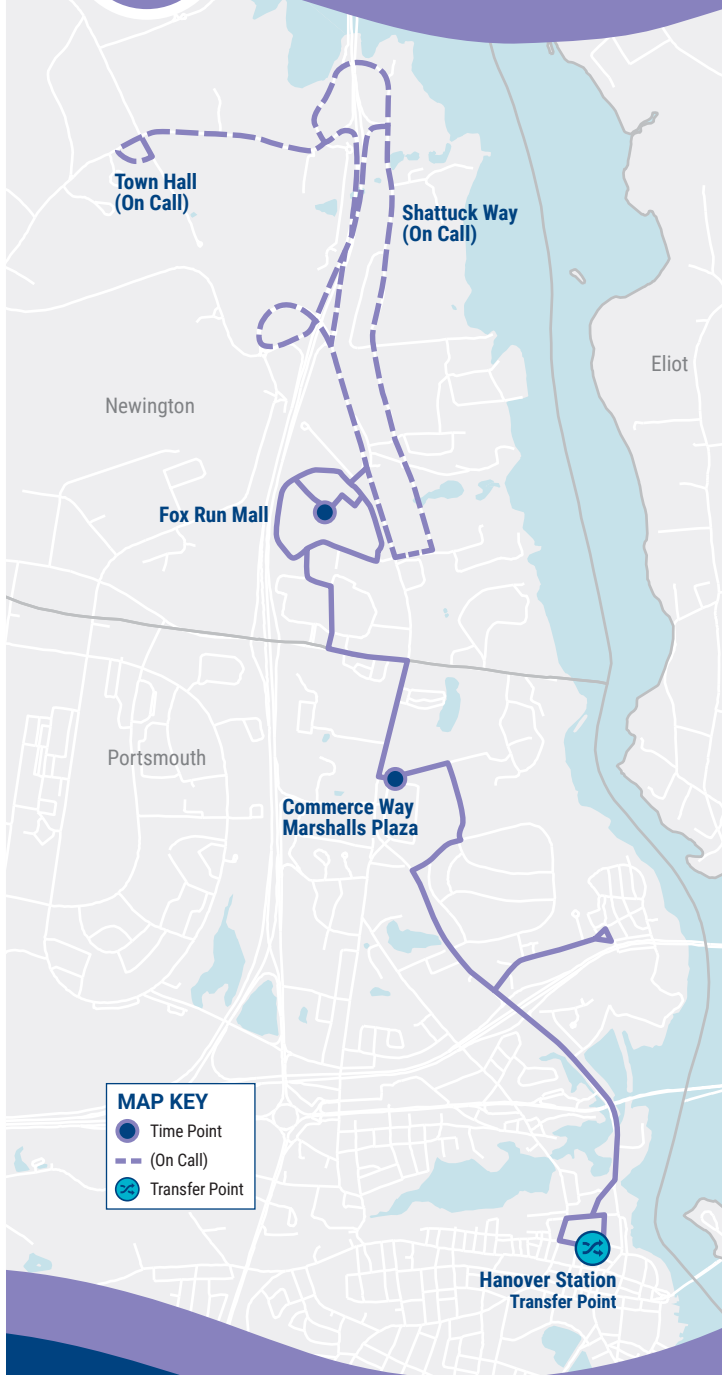





43

Route 43 Map Portsmouth • Newington



MAP KEY

-  Time Point
-  (On Call)
-  Transfer Point



Ride Information

COAST BUS FARES

Base Cash Fare **\$1.50**
 All passengers ages 5 and up are required to pay this fare each time they board a COAST bus. Passengers who pay with cash or single ride tickets may request a free transfer to their next route to complete their one-way trip. Transfers must be requested when boarding.

Half-Fare **\$ 0.75**
 Passengers 65 and older, or passengers with a disability, are entitled to pay half the cash fare. Proof of eligibility is required by showing a Medicare card, photo ID with birth date, COAST ADA Paratransit Card, or COAST Half-Fare Card. Please contact COAST to apply for a Half-Fare Card.

Multi-Ride Tickets and Passes
 Available at www.coastbus.org or call 603-743-5777, TTY 711.

Unlimited Monthly Pass **\$ 52**
 Unlimited rides on COAST routes for the month.

YOUR RIGHTS

COAST adheres to all Federal regulations regarding Civil Rights. If you need to request an ADA Reasonable Modification/ Accommodation, or if you believe you have been discriminated against or would like to file a complaint under the ADA or Title VI, please contact COAST's Civil Rights Officer at 603-516-0788, TTY 711 or email CivilRights@coastbus.org.

NO SERVICE DAYS

COAST does not operate on the following holidays:

- New Year's Day
- Martin Luther King Jr./ Civil Rights Day
- Memorial Day
- Independence Day
- Labor Day
- Thanksgiving Day
- Christmas Eve Day
- Christmas Day



42 Sumner Drive • Dover, NH 03820
 603-743-5777 • TTY 711 • www.coastbus.org

This brochure is available in alternative formats upon request.

Bus Schedule & Map 43



Effective
03.17.24

ROUTE
43

Portsmouth • Newington



Find all of the full COAST schedules online at coastbus.org

MAP OUT YOUR GAME PLAN

Planning your trip has never been easier!

www.coastbus.org




COAST SYSTEM MAP



EXPRESS • INBOUND • OUTBOUND Route 43 Portsmouth • Newington

How to Read the Schedule

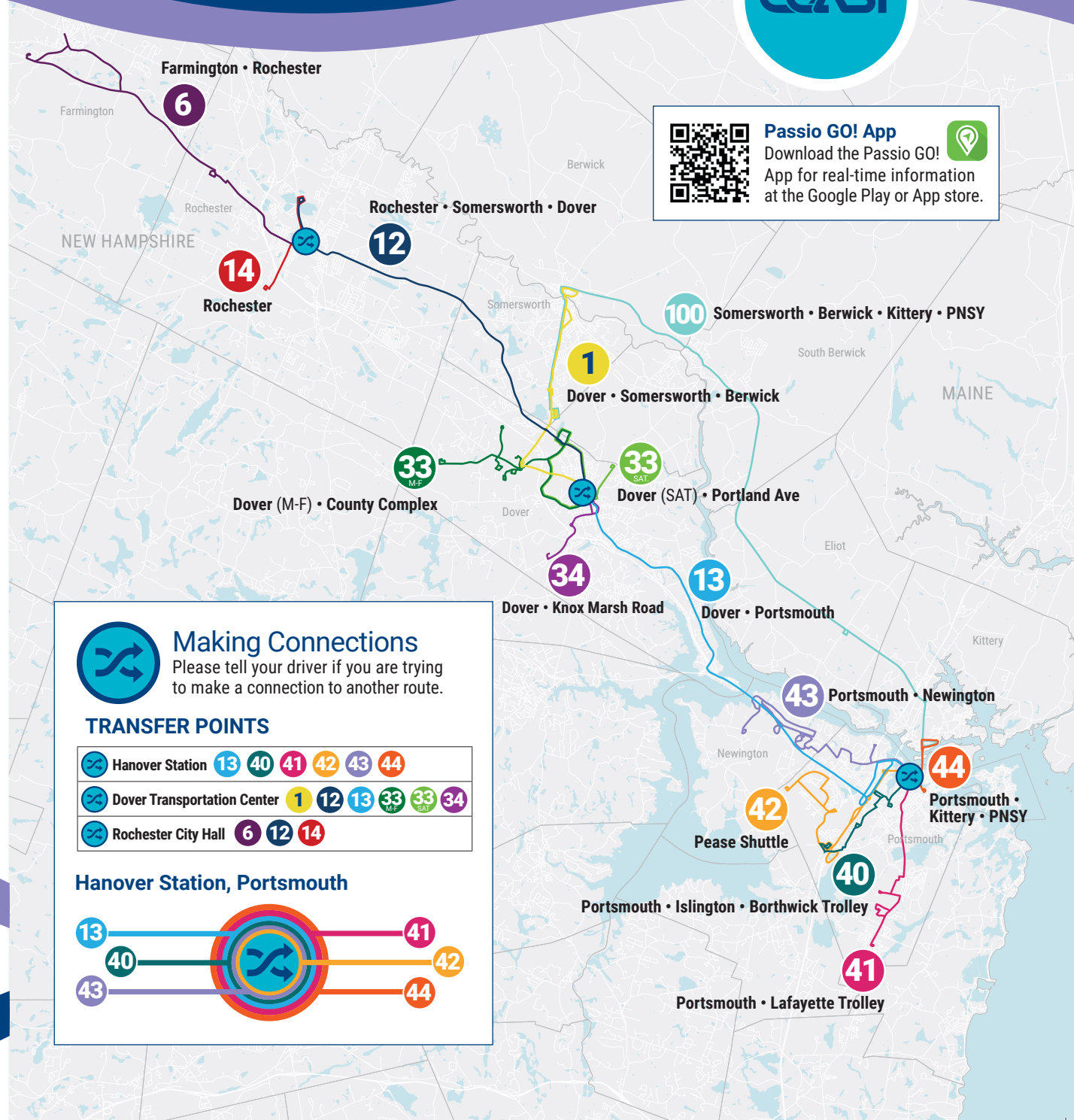
Printed bus schedules only show the timepoints  (major bus stops where the bus will hold until the scheduled departure time). In between those timepoints are many other stops that you can use. For a full listing of bus stops, visit www.coastbus.org, or use the Passio GO! App.


The times shown represent the number of minutes after the hour that the bus will depart from that stop. Last stop times are arrivals. Any exceptions will be noted.

EXPRESS (M-Sat)	Single Run Only		
DOVER - NEWINGTON	First Bus	Minutes Past Hour	Last Bus
• Dover Transportation Center	6:30am	--	--
• Fox Run Mall	6:45am	--	--

INBOUND (M-Sat)	Service On Every Hour		
NEWINGTON - PORTSMOUTH	First Bus	Minutes Past Hour	Last Bus
• Fox Run Mall	6:30am	:30	8:30pm
• Commerce Way (Marshalls Plaza)	6:36am	:36	8:36pm
• Hanover Station	6:57am	:57	8:57pm




OUTBOUND (M-Sat)	Service On Every Hour		
PORTSMOUTH - NEWINGTON	First Bus	Minutes Past Hour	Last Bus
• Hanover Station	7:00am	:00	8:00pm
• Commerce Way (Marshalls Plaza)	7:09am	:09	8:09pm
• Fox Run Mall	7:22am	:22	8:22pm



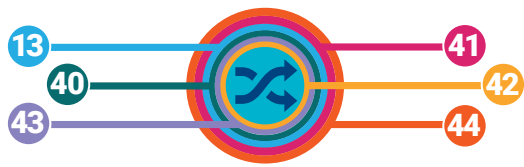
 **Passio GO! App**
Download the Passio GO! App for real-time information at the Google Play or App store.

 **Making Connections**
Please tell your driver if you are trying to make a connection to another route.

TRANSFER POINTS

 Hanover Station	13	40	41	42	43	44
 Dover Transportation Center	1	12	13	33	33	34
 Rochester City Hall	6	12	14			

Hanover Station, Portsmouth



 **MAP IT!**
For a full listing of bus stops, visit www.coastbus.org or use the Passio GO! App.