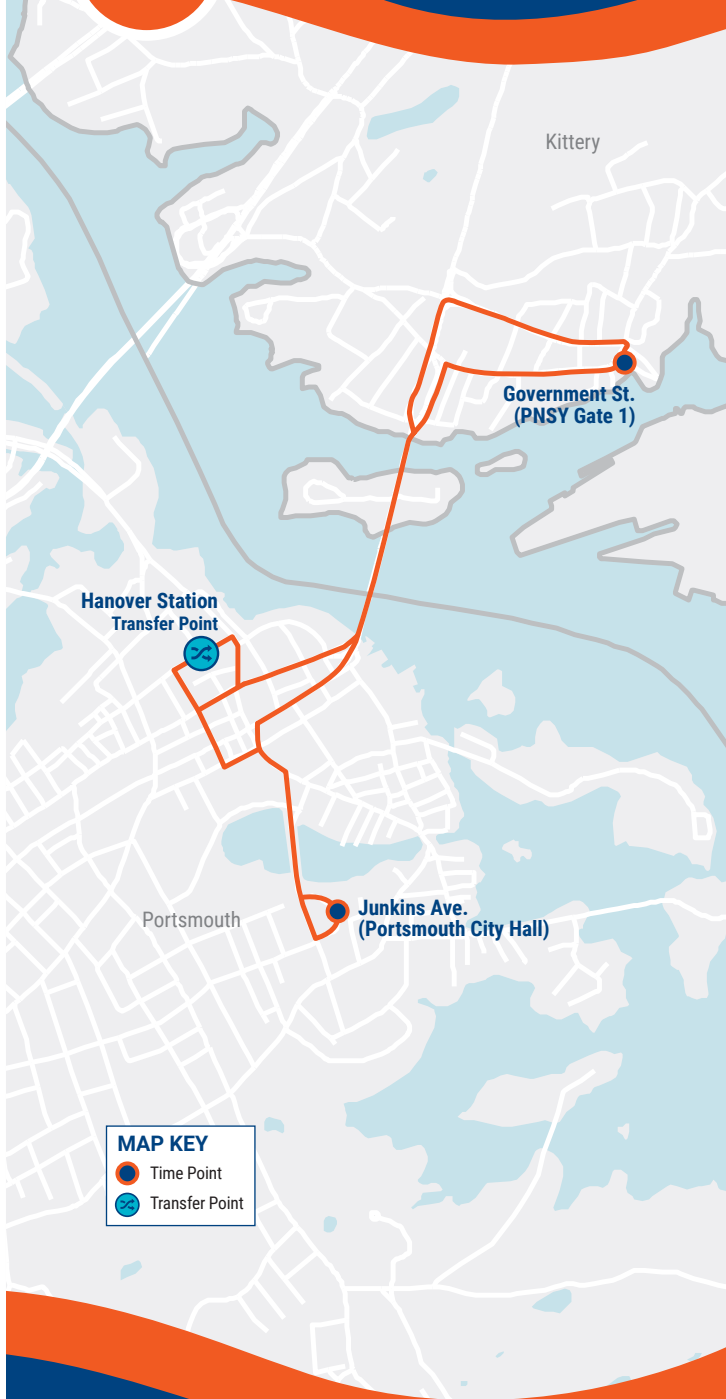


44

Route 44 Map

Portsmouth • Kittery • PNSY



Ride Information



COAST BUS FARES

Base Cash Fare

\$1.50

All passengers ages 5 and up are required to pay this fare each time they board a COAST bus. Passengers who pay with cash or single ride tickets may request a free transfer to their next route to complete their one-way trip. Transfers must be requested when boarding.

Half-Fare

\$ 0.75

Passengers 65 and older, or passengers with a disability, are entitled to pay half the cash fare. Proof of eligibility is required by showing a Medicare card, photo ID with birth date, COAST ADA Paratransit Card, or COAST Half-Fare Card. Please contact COAST to apply for a Half-Fare Card.

Multi-Ride Tickets and Passes

Available at www.coastbus.org or call 603-743-5777, TTY 711.

Unlimited Monthly Pass

\$ 52

Unlimited rides on COAST routes for the month.

YOUR RIGHTS

COAST adheres to all Federal regulations regarding Civil Rights. If you need to request an ADA Reasonable Modification/ Accommodation, or if you believe you have been discriminated against or would like to file a complaint under the ADA or Title VI, please contact COAST's Civil Rights Officer at 603-516-0788, TTY 711 or email CivilRights@coastbus.org.

NO SERVICE DAYS

COAST does not operate on the following holidays:

- New Year's Day
- Martin Luther King Jr./ Civil Rights Day
- Memorial Day
- Independence Day
- Labor Day
- Thanksgiving Day
- Christmas Eve Day
- Christmas Day

COAST

42 Sumner Drive • Dover, NH 03820
603-743-5777 • TTY 711 • www.coastbus.org

This brochure is available in alternative formats upon request.

Bus Schedule & Map 44

COAST

Effective
03.17.24

ROUTE
44

Portsmouth • Kittery • PNSY



Find all of the full COAST schedules online at coastbus.org

MAP OUT YOUR GAME PLAN

Planning your trip has never been easier!

www.coastbus.org



COAST SYSTEM MAP



OUTBOUND • INBOUND

Route 44 Portsmouth • Kittery • PNSY

How to Read the Schedule

Printed bus schedules only show the timepoints (major bus stops where the bus will hold until the scheduled departure time). In between those timepoints are many other stops that you can use. For a full listing of bus stops, visit www.coastbus.org, or use the Passio GO! App.

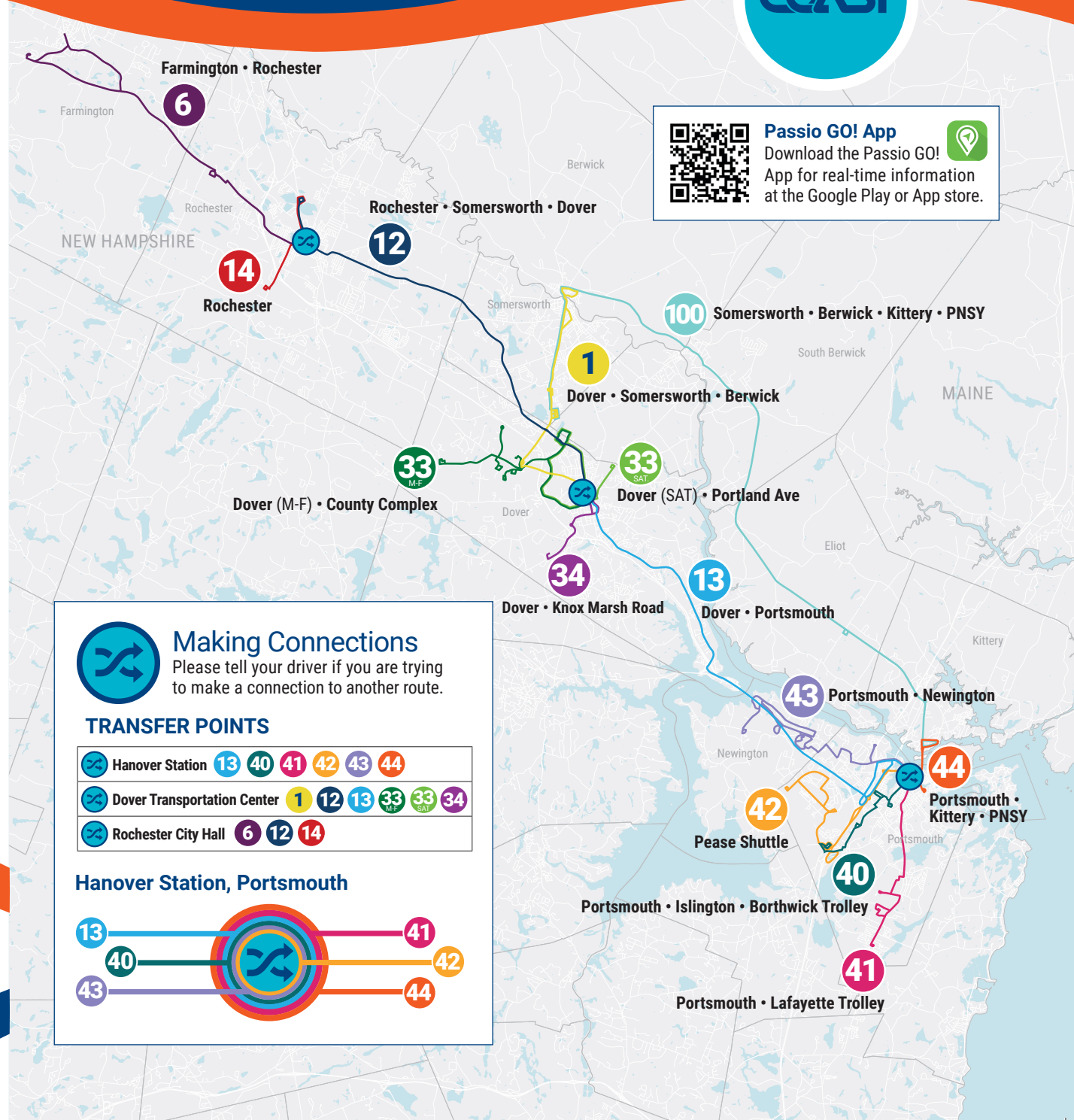
The times shown represent the number of minutes after the hour that the bus will depart from that stop. Last stop times are arrivals. Any exceptions will be noted.

OUTBOUND (M-F)	Service On Every Hour		
Hanover Station - Government St. (PNSY Gate 1)	First Bus	Minutes Past Hour	Last Bus
• Hanover Station	5:54am	:36*	6:36pm
• Junkins Ave. (Portsmouth City Hall)	7:40am	:40*	6:40pm
• Government St. (PNSY Gate 1)	6:00am	:45*	6:45pm

*Regular hourly schedule starts during the hour of 7am.

INBOUND (M-F)	Service On Every Hour		
Government St. (PNSY Gate 1) - Hanover Station	First Bus	Minutes Past Hour	Last Bus
• Government St. (PNSY Gate 1)	6:35am	:45*	8:45pm
• Hanover Station	6:42am	:54*	8:54pm

*Regular hourly schedule starts during the hour of 7am.



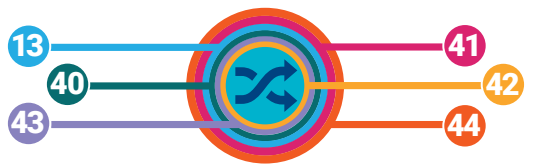
Passio GO! App
Download the Passio GO! App for real-time information at the Google Play or App store.

Making Connections
Please tell your driver if you are trying to make a connection to another route.

TRANSFER POINTS

Hanover Station	13	40	41	42	43	44
Dover Transportation Center	1	12	13	33	33	34
Rochester City Hall	6	12	14			

Hanover Station, Portsmouth



MAP IT!

For a full listing of bus stops, visit www.coastbus.org or use the Passio GO! App.