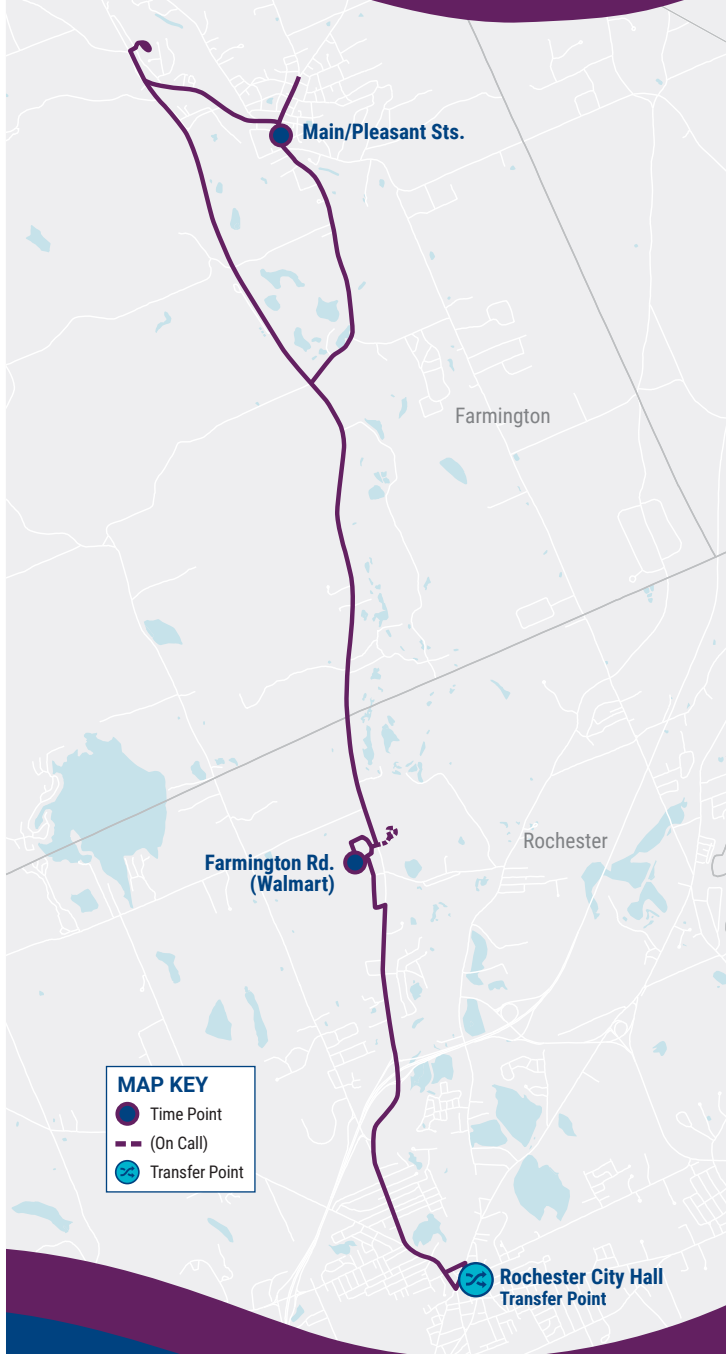


# 6

## Route 6 Map Farmington • Rochester



## Ride Information

### COAST BUS FARES

**Base Cash Fare** **\$1.50**  
*All passengers ages 5 and up are required to pay this fare each time they board a COAST bus. Passengers who pay with cash or single ride tickets may request a free transfer to their next route to complete their one-way trip. Transfers must be requested when boarding.*

**Half-Fare** **\$ 0.75**  
*Passengers 65 and older, or passengers with a disability, are entitled to pay half the cash fare. Proof of eligibility is required by showing a Medicare card, photo ID with birth date, COAST ADA Paratransit Card, or COAST Half-Fare Card. Please contact COAST to apply for a Half-Fare Card.*

**Multi-Ride Tickets and Passes**  
 Available at [www.coastbus.org](http://www.coastbus.org) or call 603-743-5777, TTY 711.

**Unlimited Monthly Pass** **\$ 52**  
*Unlimited rides on COAST routes for the month.*

### YOUR RIGHTS

COAST adheres to all Federal regulations regarding Civil Rights. If you need to request an ADA Reasonable Modification/ Accommodation, or if you believe you have been discriminated against or would like to file a complaint under the ADA or Title VI, please contact COAST's Civil Rights Officer at 603-516-0788, TTY 711 or email [CivilRights@coastbus.org](mailto:CivilRights@coastbus.org).

### NO SERVICE DAYS

COAST does not operate on the following holidays:

- New Year's Day
- Martin Luther King Jr./ Civil Rights Day
- Memorial Day
- Independence Day
- Labor Day
- Thanksgiving Day
- Christmas Eve Day
- Christmas Day



42 Sumner Drive • Dover, NH 03820  
 603-743-5777 • TTY 711 • [www.coastbus.org](http://www.coastbus.org)

*This brochure is available in alternative formats upon request.*

## Bus Schedule & Map 6



Effective  
03.17.24

# ROUTE 6

Farmington • Rochester



Find all of the full COAST schedules online at [coastbus.org](http://coastbus.org)

## MAP OUT YOUR GAME PLAN

Planning your trip has never been easier!

[www.coastbus.org](http://www.coastbus.org)



# COAST SYSTEM MAP



## SOUTHBOUND • NORTHBOUND Route 6 Farmington • Rochester

### How to Read the Schedule

Printed bus schedules only show the timepoints ● (major bus stops where the bus will hold until the scheduled departure time). In between those timepoints are many other stops that you can use. For a full listing of bus stops, visit [www.coastbus.org](http://www.coastbus.org), or use the Passio GO! App.

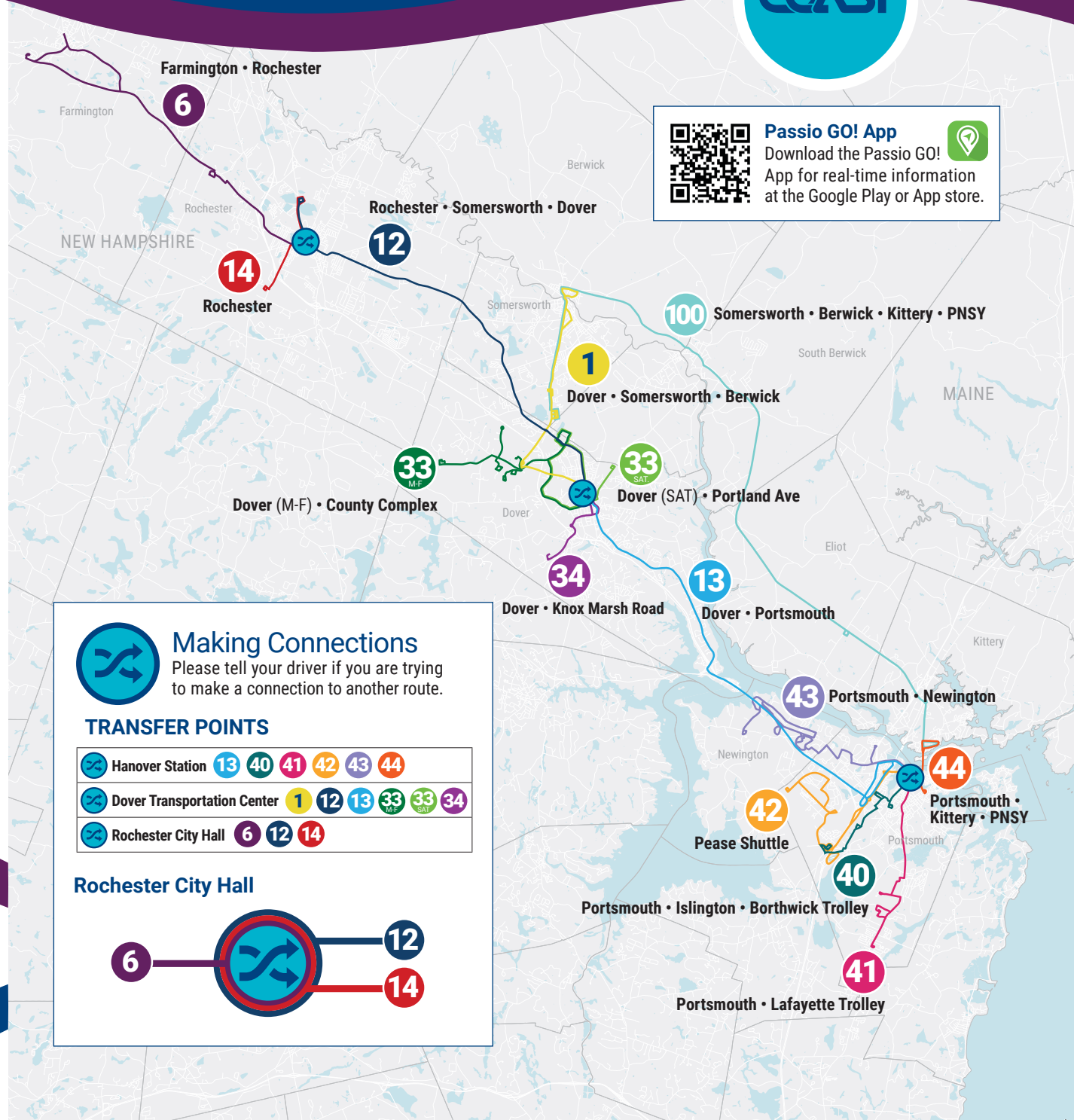
The times shown represent the number of minutes after the hour that the bus will depart from that stop. Last stop times are arrivals. Any exceptions will be noted.

SOUTHBOUND (M-F)	Service On Every Hour		
FARMINGTON - ROCHESTER	First Bus	Minutes Past Hour	Last Bus
● Main/Pleasant Sts.	5:25am	:25*	5:25pm
● Farmington Rd. (Walmart)	5:42am	:42*	5:42pm
● Rochester City Hall	5:50am	:50*	5:50pm

\* There are no runs at 8:25am, 1:25pm, or 2:25pm.

NORTHBOUND (M-F)	Service On Every Hour		
ROCHESTER - FARMINGTON	First Bus	Minutes Past Hour	Last Bus
● Rochester City Hall	6:00am	:00**	6:00pm
● Farmington Rd. (Walmart)	6:12am	:12**	6:12pm
● Main/Pleasant Sts.	6:25am	:25**	6:25pm

\*\* There are no runs at 8:55am, 1:55pm, or 2:55pm.



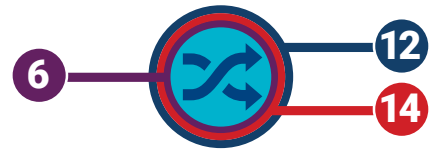
**Passio GO! App**  
Download the Passio GO! App for real-time information at the Google Play or App store.

**Making Connections**  
Please tell your driver if you are trying to make a connection to another route.

### TRANSFER POINTS

Hanover Station	13	40	41	42	43	44
Dover Transportation Center	1	12	13	33	33	34
Rochester City Hall	6	12	14			

### Rochester City Hall



**MAP IT!**  
For a full listing of bus stops, visit [www.coastbus.org](http://www.coastbus.org) or use the Passio GO! App.