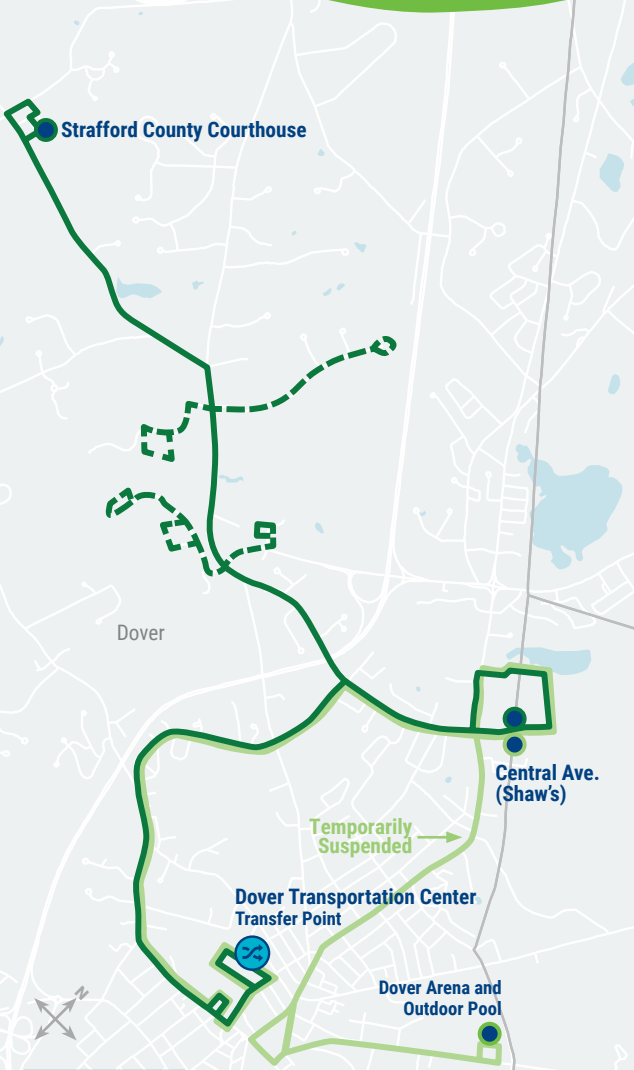


# Route 33 Map

Dover (M-F) • County Complex  
Dover (SAT) • Portland Ave.



MAP KEY	
	M-F Time Point
	SAT Time Point
	(On Call)
	Transfer Point



# Ride Information

## COAST BUS FARES

**Base Cash Fare** **\$1.50**  
All passengers ages 5 and up are required to pay this fare each time they board a COAST bus.

**Half-Fare** **\$ 0.75**  
Passengers 65 and older, or passengers with a disability are entitled to pay half the cash fare. Proof of eligibility is required by showing a Medicare card, photo ID with birth date, COAST ADA Paratransit Card, or COAST Half-Fare Card. Please contact COAST to apply for a Half-Fare Card.

**Multi-Ride Tickets and Passes**  
Available at [www.coastbus.org](http://www.coastbus.org) or call 603-743-5777, TTY 711.

**Unlimited Monthly Pass** **\$ 52**  
Unlimited rides on COAST Routes for the month.

## YOUR RIGHTS

COAST adheres to all Federal regulations regarding Civil Rights. If you need to request an ADA Reasonable Modification/ Accommodation, or if you believe you have been discriminated against or would like to file a complaint under the ADA or Title VI, please contact COAST's Civil Rights Officer at 603-516-0788, TTY 711 or email [CivilRights@coastbus.org](mailto:CivilRights@coastbus.org).

## NO SERVICE DAYS

COAST does not operate on the following holidays:

- New Year's Day
- Labor Day
- Martin Luther King Jr./ Civil Rights Day
- Thanksgiving Day
- Memorial Day
- Christmas Eve Day
- Independence Day
- Christmas Day



42 Sumner Drive • Dover, NH 03820  
603-743-5777 • TTY 711 • [www.coastbus.org](http://www.coastbus.org)  
*This brochure is available in alternative formats upon request.*

# Bus Schedule & Map



Effective  
09.17.22



Dover (M-F) • County Complex  
Dover (SAT) • Portland Ave.



Find all of the full COAST schedules online at [coastbus.org](http://coastbus.org)

# MAP OUT YOUR GAME PLAN

Planning your trip has never been easier!

[www.coastbus.org](http://www.coastbus.org)



# COAST SYSTEM MAP

## OUTBOUND • INBOUND

# Route 33

Dover • (M-F) County Complex • (SAT) Portland Ave.

### How to Read the Schedule

Printed bus schedules only show the timepoints (major bus stops where the bus will hold until the scheduled departure time). In between those timepoints are many other stops that you can use. For a full listing of bus stops, visit [www.coastbus.org](http://www.coastbus.org), or use the Passio Go! App.

The times shown represent the number of minutes after the hour that the bus will depart from that stop. Last stop times are arrivals. Any exceptions will be noted.

OUTBOUND (M-F)	Service On Every Hour		
Dover Transportation Center - Strafford County Courthouse	First Bus	Minutes Past Hour	Last Bus
● Dover Transportation Center	6:30am	:30*	7:30pm**
● Central Ave. (Shaw's)	6:44am	:44*	7:44pm**
● Strafford County Courthouse	6:58am	:58*	6:58pm

\*No Service during the hour of 8am. \*\*Additional partial run.

INBOUND (M-F)	Service On Every Hour		
Strafford County Courthouse - Dover Transportation Center	First Bus	Minutes Past Hour	Last Bus
● Strafford County Courthouse	6:59am	:59*	6:59pm
● Central Ave. (Shaw's)	6:12am	:12*	7:44pm**
● Dover Transportation Center	6:25am	:25*	7:57pm**

\*No Service during the hour of 9am. \*\*Additional partial run.

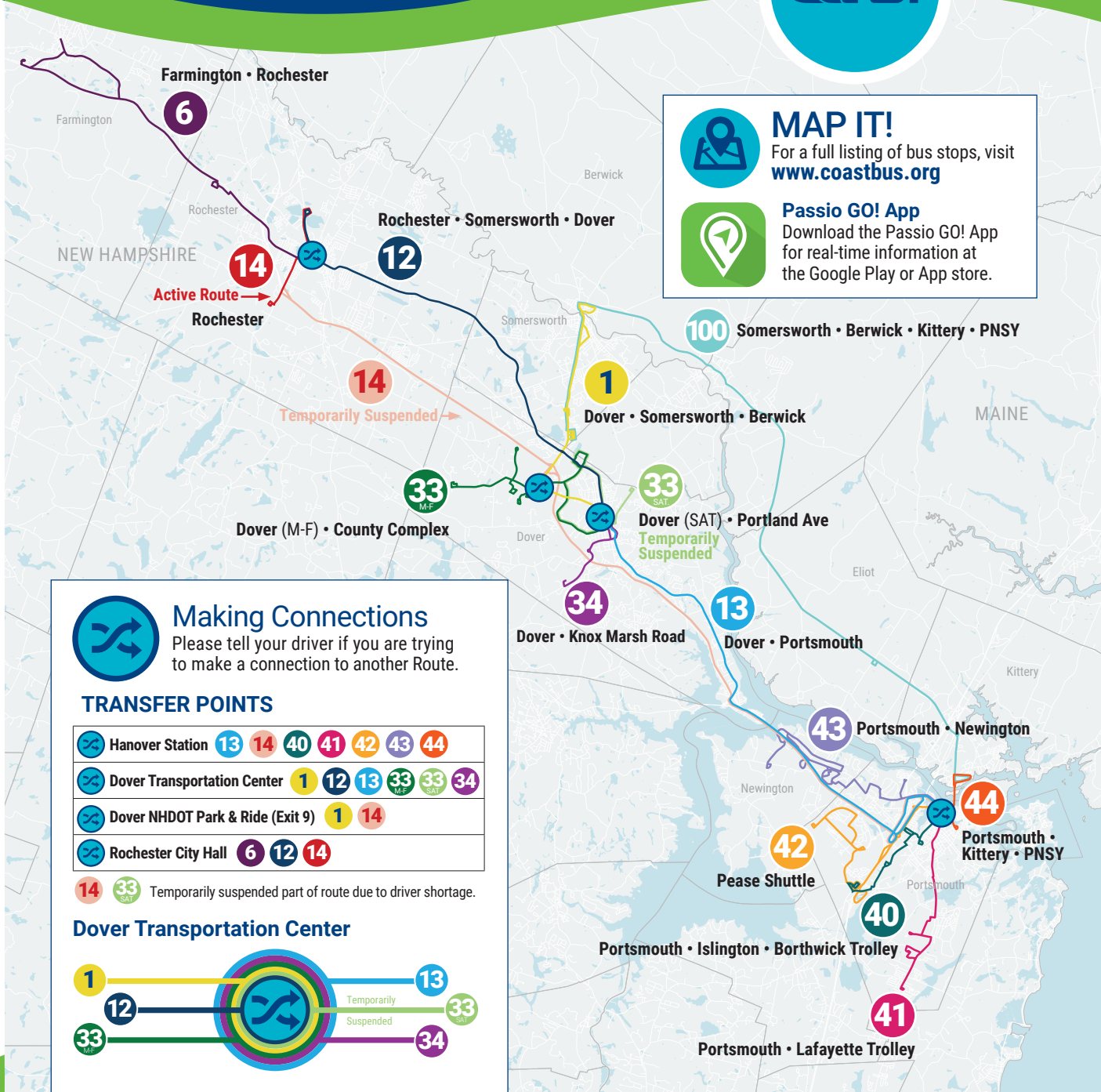
### ALL SATURDAY SERVICE IS TEMPORARILY SUSPENDED

OUTBOUND (SAT)	Service On Every Hour		
Dover Transportation Center - Dover Arena and Outdoor Pool	First Bus	Minutes Past Hour	Last Bus
● Dover Transportation Center	6:30am	:30*	7:30pm**
● Central Ave. (Shaw's)	6:44am	:44*	7:44pm**
● Dover Arena and Outdoor Pool	6:56am	:56*	6:56pm

\*No Service during the hour of 8am. \*\*Additional partial run.

INBOUND (SAT)	Service On Every Hour		
Dover Arena and Outdoor Pool - Dover Transportation Center	First Bus	Minutes Past Hour	Last Bus
● Dover Arena and Outdoor Pool	6:57am	:57*	6:57pm
● Central Ave. (Shaw's)	6:12am	:12*	7:44pm**
● Dover Transportation Center	6:25am	:25*	7:57pm**

\*No Service during the hour of 9am. \*\*Additional partial run.



**MAP IT!**  
For a full listing of bus stops, visit [www.coastbus.org](http://www.coastbus.org)

**Passio GO! App**  
Download the Passio GO! App for real-time information at the Google Play or App store.

**Making Connections**  
Please tell your driver if you are trying to make a connection to another Route.

**TRANSFER POINTS**

	Hanover Station	13	14	40	41	42	43	44
	Dover Transportation Center	1	12	13	33 <sub>M-F</sub>	33 <sub>SAT</sub>	34	
	Dover NHDOT Park & Ride (Exit 9)	1	14					
	Rochester City Hall	6	12	14				

